



Top Workmanship Quality Issues:

Timeframe: December 2006

Snap Shots of the Month



Americas Top 5 Defects MTD

December Statistics

Final Audits	Nov	Dec	
•Frame Assembly	.010	.086	↑
• Frame Designation	.014	.040	↑
•Circuit Pack	.004	.040	↑
•Routing Cables	.008	.021	↑
• Securing Cables	.037	.017	↓

No Inprocess audits in December

Previous Month Top 5 Statistics

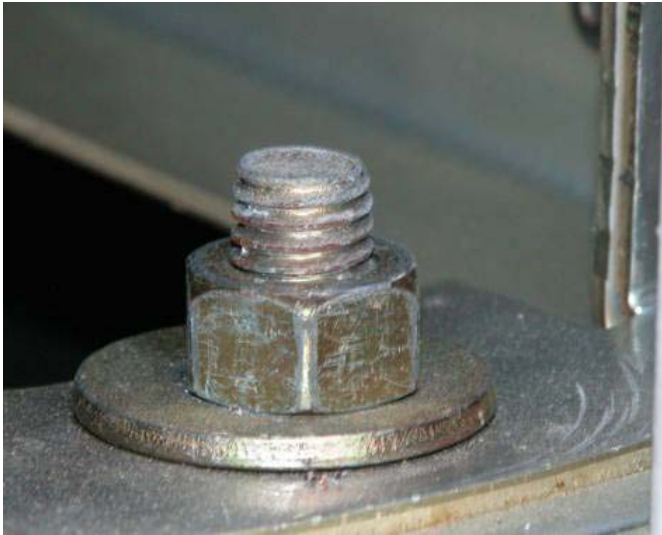
Final Audits	Oct	Nov
Cable Designations	.080	.037
Securing Cables	.065	.037
Frame Designation	.038	.014
Admin Requirements*	.026	.020
Stripping Wires	.004	.014

In-Process Audits:	Oct	Nov
Frame Assembly	.011	.111
Admin Requirements*	.011	.056
Securing Cables	.011	.167

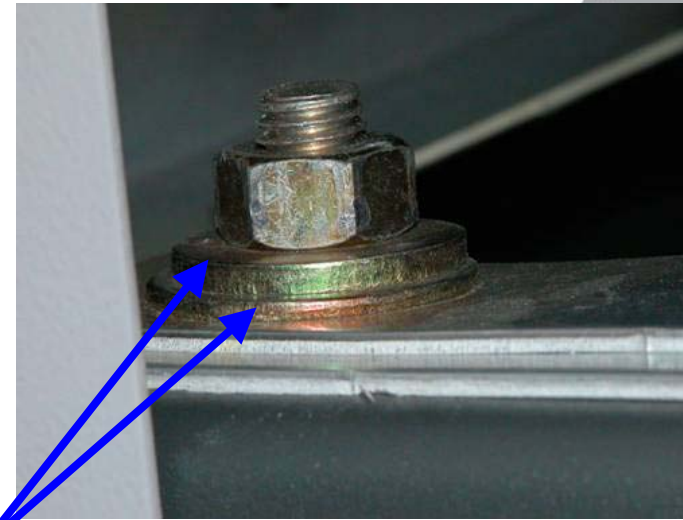
Note: Defect categories in RED represent carry-overs from the previous month.

*Admin Defects are for drawings not being mark and customer paperwork requirement not met.

Americas Final Audits



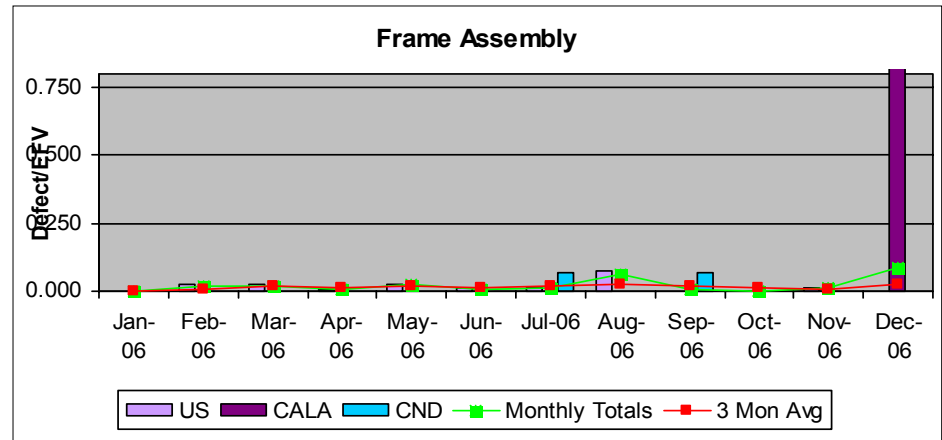
Frame Assembly: Missing Belleville washer on anchor stack-up assembly.



Correct Method : Washers were installed properly.

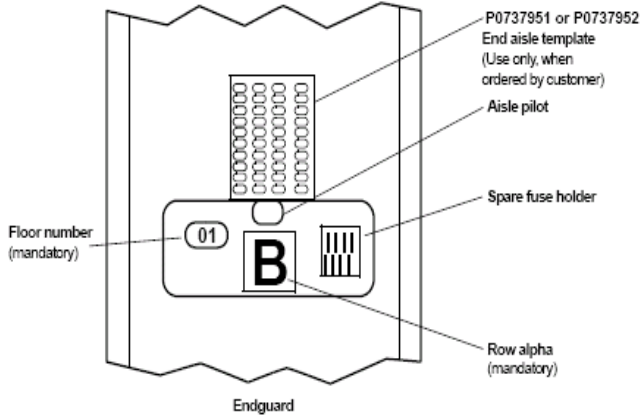
Impact

Missing parts such as the washer above can weaken or make the frame un-stable over time.



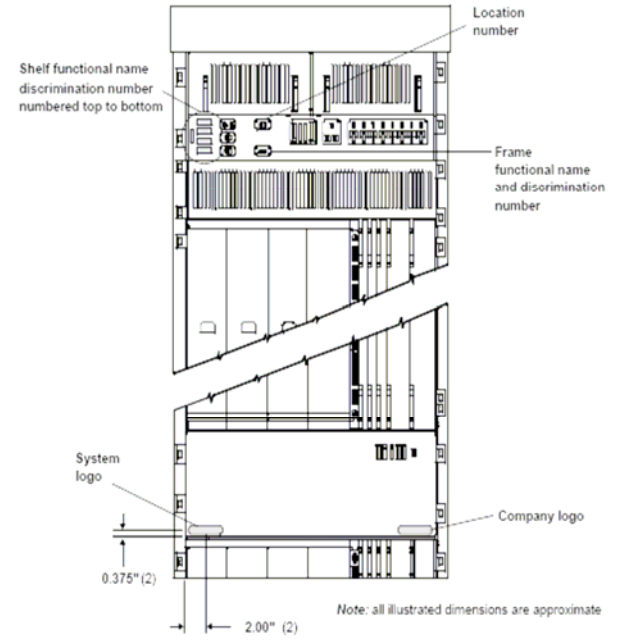
Americas Final Audits

Figure 29 – Aisle and Floor Location Labeling



The three month average (red line) trending is showing a decline and has been relatively low this year. Although we continue to see spikes from one month to another. The green line below is moving back upward. Continued focus on proper designations application for all products and this defect category can be eliminated.

Figure 34 – Frame Labeling for LCEI Frames



Impact
 Incorrect or no frame designations may cause confusion and time loss in trying to troubleshoot or identify the cable in the future. Customer dissatisfaction.

